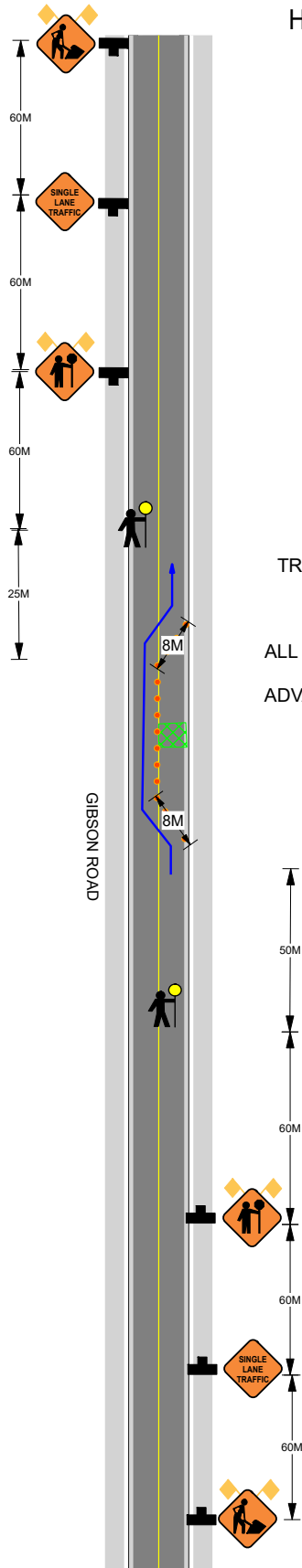




DECEMBER 2020 / JANUARY 2021
 HOURS OF OPERATION 9:00AM - 3:00PM



NOTE:

ALL SIDEWALKS - CROSSWALKS WILL REMAIN OPEN

TRAFFIC CONTROL WILL ASSIST WITH DRIVEWAYS AFFECTED BY
 WORK ZONE CLOSURE

SPEED LIMIT ON GIBSON ROAD IS 60 KM PER HOUR
 ALL SIGNS WILL BE PLACED ON WINDMASTER STANDS WITH FLAGS

ADVANCE WARNING SIGNS WILL BE PLACED ON ALL INTERSECTING
 SIDE STREETS WHEN REQUIRED

LEGEND

- DIRECTION TRAFFIC FLOW
- TUBULAR MARKERS
- WORK AREA
- SIGN STANDS
- TRAFFIC CONTROLLER
- BUS STOP